

# The Parents' Place of Maryland 2022 Annual Report



## Our mission

is to empower families as advocates and partners in improving education and health outcomes for children with disabilities and special healthcare needs with a commitment to diversity and equity.

16,348



families served through one-on-one assistance and training

117,401



children and youth in Special Education in MD

86,416



visits to our website

1



Maryland's ONLY Parent Training and Health Information Center

4,746



social media followers and subscribers

(including Facebook, Twitter, and YouTube)

35%

of families served were Black or African American.

4% higher compared to Maryland's population

14%

of families served were Hispanic or Latinx.

3% higher compared to Maryland's population

10%

of families served indicated being two or more races.

7% higher compared to Maryland's population

## Expenses

Administrative

10.22%



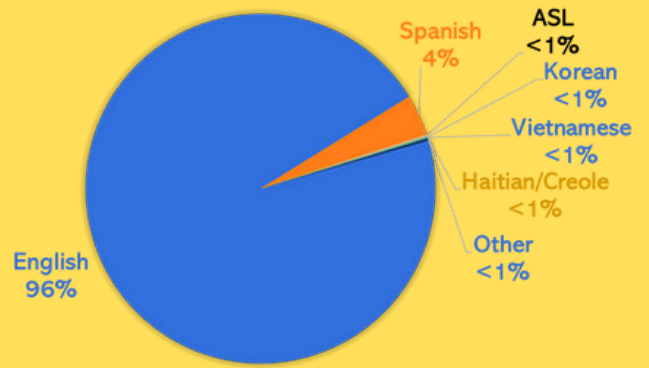
89.78%

Program Services

"I am 100% sure that all of the advice that [my Parent Educator] has given me has gotten [my family] this far...I feel much more confident in my understanding... and how to advocate for my child...Your time, patience, advice, and kindness during this process are so appreciated. Thank you for everything!" - PPMD Parent

PPMD is a guiding light,  
 has taught me much,  
 and enables me to help my  
 child. Thank you!  
 - PPMD Parent and Donor

PRIMARY LANGUAGES OF FAMILIES SERVED

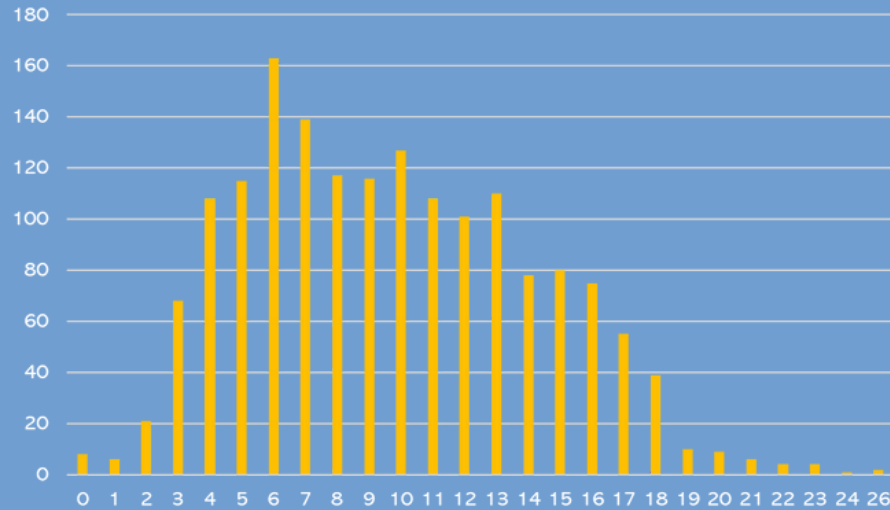


99% of surveyed families said our information and services were of quality

96% of surveyed families said our information and services were relevant

97% of surveyed families said our information and services were useful

Ages of Children of Families Served



## A message from our Board President and Executive Director:

The Parents' Place of MD (PPMD) is honored to be Maryland's only Parent Training and Health Information Center. For over 30 years, our mission has been to support and train families to be empowered as advocates and partners in improving education and health outcomes for children with disabilities and special healthcare needs with a commitment to diversity and equity.

The unpredictability of the pandemic significantly affected many of our families by magnifying and exposing social and economic disparities, but one thing that has remained constant is our unwavering passion for serving our communities. Our staff has been able to pivot quickly and adapt to the virtual landscape, allowing us to continue to serve families in need. Through these efforts, we have been able to reach even more families, particularly those in underserved and diverse communities. We are thrilled to share that 2022 was a record year for our organization! We served over 16,000 families, with a remarkable 30% increase in underserved and diverse communities. This is a true testament to our unwavering commitment to diversity and equity, and to serving all families according to their unique needs. It doesn't matter where they are, or what challenges they may face - we are here to support them every step of the way. And this is truly something to be celebrated. In these times of uncertainty, it is more important than ever that we come together to support our families and communities. We are proud to represent PPMD and its unwavering dedication to providing direct support to families in need. The staff is simply amazing! They never missed a beat in answering calls, providing training, and offering a variety of resources to families. Through the challenges brought on by the pandemic, they are truly the backbone of the 'new normal'. So let us look to the future with gratitude and optimism, and remember to invest in PPMD's families as they continue to navigate this difficult journey. Together, we can make a positive impact and contribute to better outcomes for our children.



ppmd.org